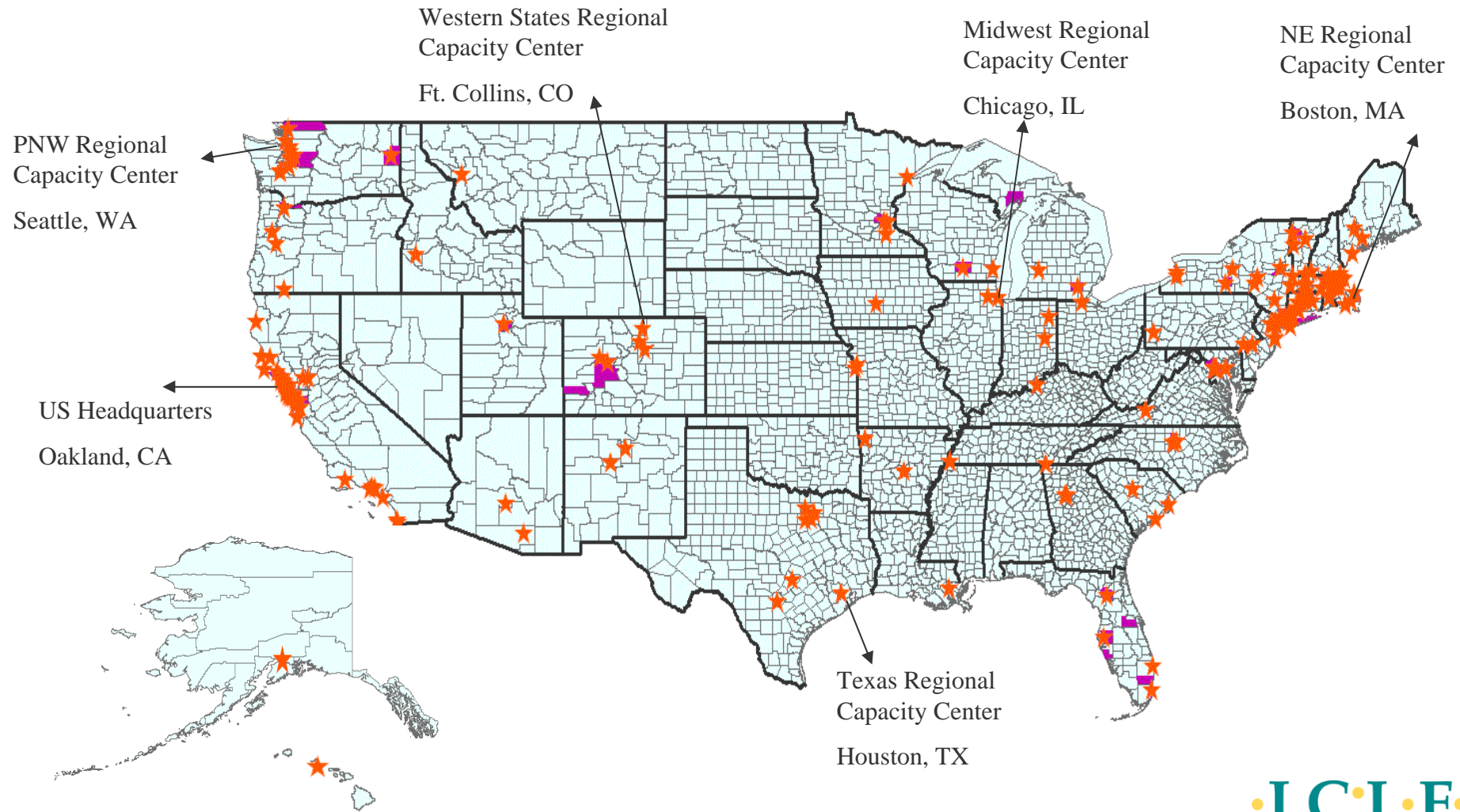

Developing Community- Scale Emissions Inventories Guidance for Local Governments

Garrett Fitzgerald
Director of Programs
ICLEI - Local Governments for Sustainability

*Mayors Climate Protection Summit
Seattle, WA
November 2, 2007*

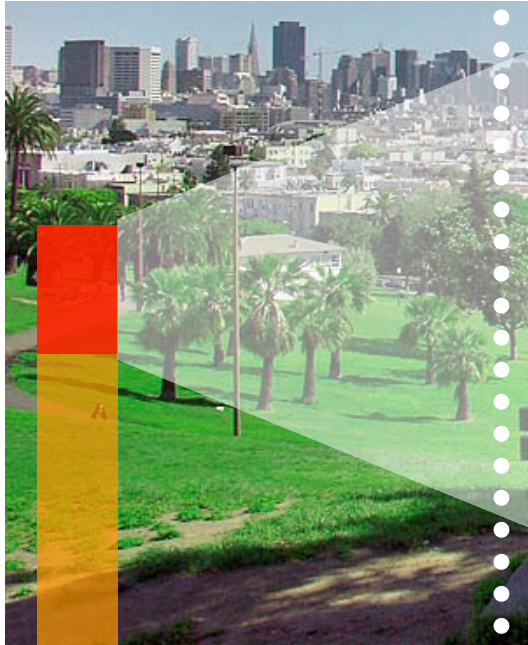
ICLEI USA Network



The ICLEI 5-Milestone Process



Milestones 1-3: Baseline; Target; Action Plan



30%

Commercial / Industrial

Milestone 1: Baseline

Milestone 2: 20% Red

Milestone 3: Develop

Commercial Sector Emissions Reductions

New Construction Energy Codes

- Require higher efficiency HVAC, lighting and window technologies; reduced air infiltration; and appropriate solar orientation
- Implement in 2009
- Anticipated annual savings: 64.5 million kWh
450,000 therms
77,300 tons CO₂e
\$110,404,859

Existing Commercial Facility Retrofits

- Offer free facility energy audits and expert advice, along with financial incentives for HVAC and lighting equipment improvements
- Implement in 2008
- Anticipated annual savings: 80 million kWh
700,000 therms
105,200 tons CO₂e
\$79,407,558

Install Solar Photovoltaic Panels

- Install photovoltaic panels on all municipal facilities where feasible
- Implement in 2007
- Anticipated annual savings: 140,000 kWh
103 tons CO₂e
\$14,000

What Does ICLEI Provide?

- Peer Network
- Technical Assistance
- Training Opportunities
- Standard Methodology
- Emissions Analysis Protocols
- Software Tools and Resources
- Competitive Grants
- Media and Recognition

The Importance of Measuring Emissions & Reductions

- Document baseline performance
- Enable appropriate comparison
- Compare alternative scenarios
- Illustrate opportunities
- Monitor progress toward emission reduction goals
- Demonstrate progress / tell your story!

Developing a Community-Scale Greenhouse Gas Emissions Inventory

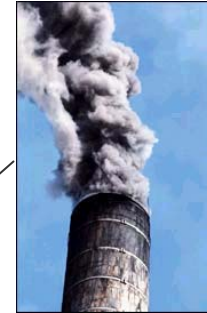
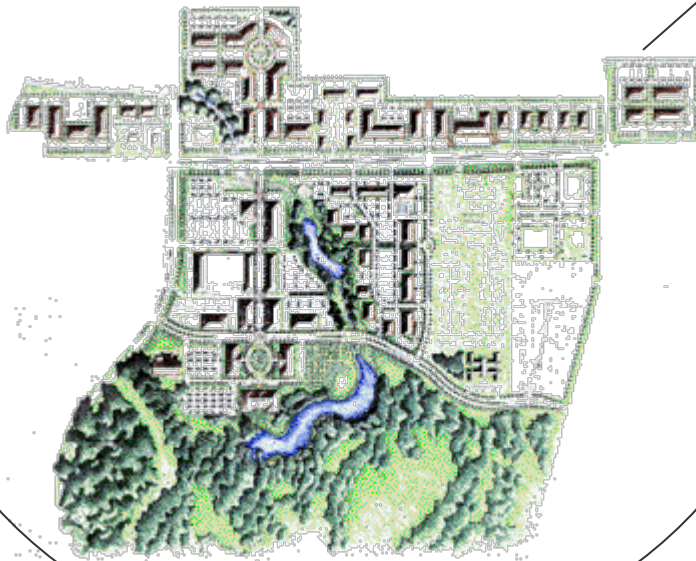
The Community-Scale Greenhouse Gas Emissions Analysis Protocol

- ICLEI is currently formalizing protocols
- Opportunity for all to provide input
- Highlights of draft protocol:
 - International Protocol w/ US Supplement
 - Geographic boundary
 - Scopes
 - Key vs. secondary emissions sources
 - Reporting guidance

Boundary Issues / Scopes

Pleasantville

Scope 1



Scope 2

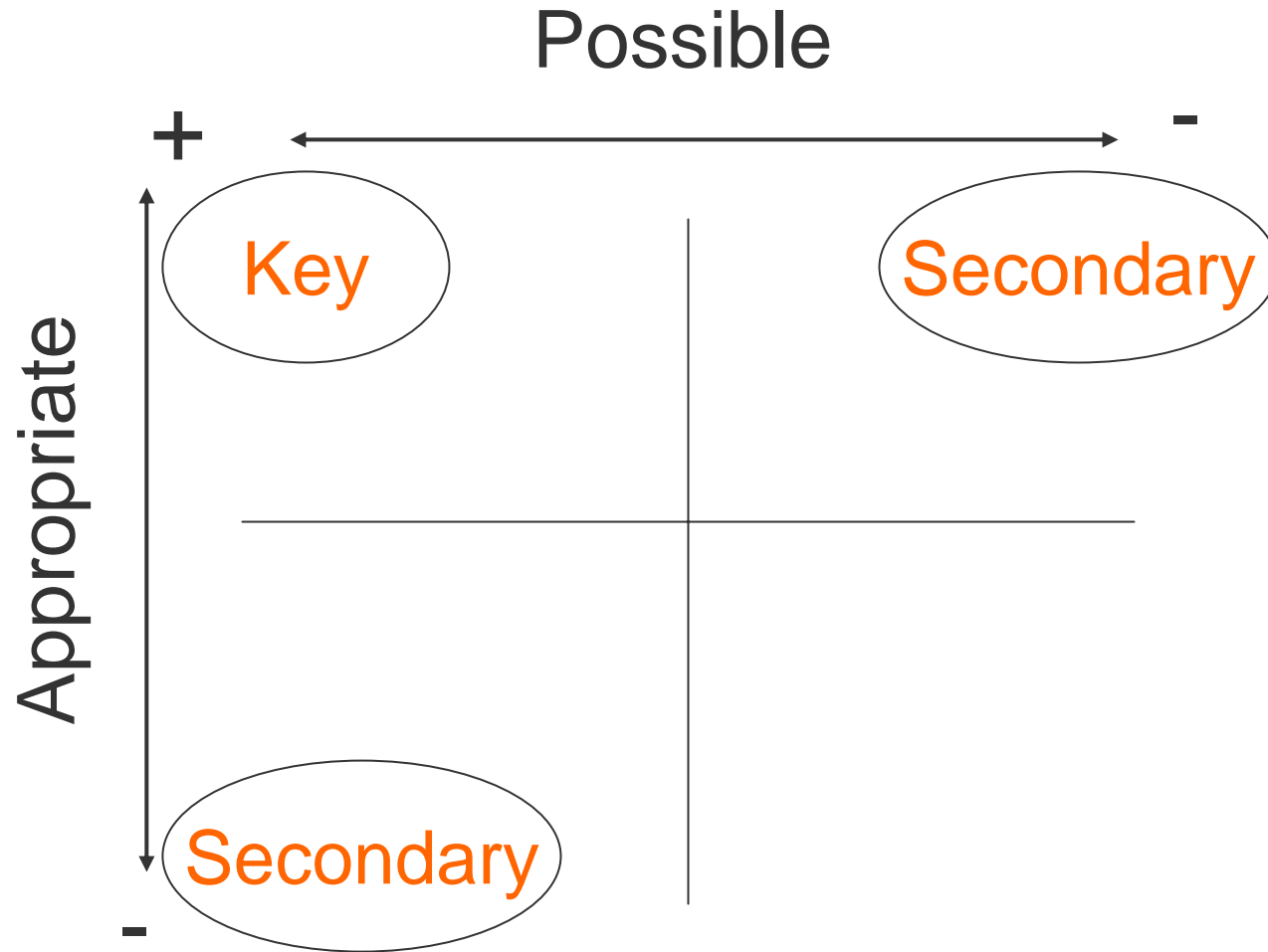


Scope 3



Information
Item

Key vs. Secondary Emissions



For More Information

Garrett Fitzgerald

Director of Programs

ICLEI – Local Governments for Sustainability

(510) 844-0699

Garrett.fitzgerald@iclei.org

www.iclei.org/usa